



AutoForecastSolutions

AFS Services

ePower Pack

Joseph McCabe, President

855.734.4590 ext. 1001

jmccabe@autoforecastsolutions.com

GLOBAL ELECTRIFIED OUTLOOK

Light Vehicle Alternative Propulsion Forecast



PACKAGE

BEV PHEV
EREV FCEV
HEV Mild / Full



CONFIGURATION

eAxle Crankshaft
ISG Input Shaft
BAS Hub
P0-P4 Other



APPLICATION

Vehicle Life Cycle
Source Opportunities
Timing Outlook

Coverage & Content



370+ OEMs
2,700+ Vehicles
59 Countries

Production Volumes



8-Year Outlook
Updated Monthly

Package Includes:

- 12-month online access; updated monthly
- Historical, current, and future electrification production outlook
- ePower Pack Guide
- A complete suite of web-based reporting tools
- Concierge-level support from industry experts
- Monthly industry analysis

ePower Pack Guide

Comprehensive Directory of Current & Future Announced Electrified Vehicles



- 500+ Pages
- Global Coverage
- Vehicle Detail
- Specifications
- EV Glossary
- Attributes
- Photos
- And More...

AutoForecastSolutions.com

AFS ePower Pack | 2019



AFS ePower Pack Guide

Supplement to the AFS ePower Pack
Global Production Outlook

A comprehensive view of the past, current, and future global automotive electrified market



Includes: Images, specs, details, and more!

AFS Services – ePower Pack subscription

AFS ePower Pack Electrified Outlook

- 12-month access to the global ePower Pack light vehicle forecast
 - Detailing every electrified light vehicle built globally:
 - VM, Platform, Program, Brand, Nameplate, Plant, Start of productions / End of production
 - Updated monthly with actuals and new production outlook through 2026
- Full suite of user-friendly reporting and analysis tools
 - Sample report of the Opportunity Identification on the following slide
 - Vehicle production detail by powertrain variant, timing, and volume

AFS ePower Pack Guide

- 800+ page report guide of every electrified light vehicle worldwide, through 2026
- Glossary and industry definitions
- Images, specs, motor position, and much more
- Use in conjunction with ePower Pack Electrified Outlook
- Sample data provided upon request and commitment to learn more about the total AFS Services

AFS Market Alerts

- Sent weekly, monthly, and periodically based on content
- Additional details further in this document

Bentley

Bentayga PHEV





Plug-in Hybrid Electric Vehicle

Production: announced in September 2015, expected to begin in mid 2018

Engine: Volkswagen 2.9L V6

Motor: 101kW

Power (combined): 462hp

VKey: 6934, 11182

AFS ePower Pack Global Electrified Outlook

AFS ePower Pack Electrified Outlook:

Vehicle/Powertrain Database: Access to the global view of every electrified light vehicle built in the past, currently, and into the future through 2026

Opportunity Identification: User-friendly, web-interface to report, analyze, and extract vehicle data by powertrain detail. Filter, sort, and download to Excel.

Frequency: Updated monthly, including variance analysis and industry market alerts to stay informed to improve competitiveness

Support: Direct access to the AFS data team members, each with over 25 years of automotive forecasting experience.

Opportunity Identification Reporting by Powertrain Type:

- Vehicle assembly detail, location, and electrified powertrain variants
- Average annual production volumes and graphic of lifecycle
- One of many reports available in the user-friendly, web-based interface

Your Primary AFS Support Team

Data is only half of the solution. Providing you direct access to our team to support your AFS Services and your critical decision making efforts is equally important. We look forward to hearing from you.

Joseph McCabe

- President & CEO
- jmccabe@autoforecastsolutions.com
- Office: 610.813.6370
- Mobile: 610.662.1441



Sabrina Keyes

- Manager, Business Development
- skeyes@autoforecastsolutions.com
- Michigan office
- Mobile: 313.335.2354



Sam Fiorani

- VP, Global Vehicle Forecasting
- sfiorani@autoforecastsolutions.com
- Office: 610.813.6372
- Mobile: 484.410.4132

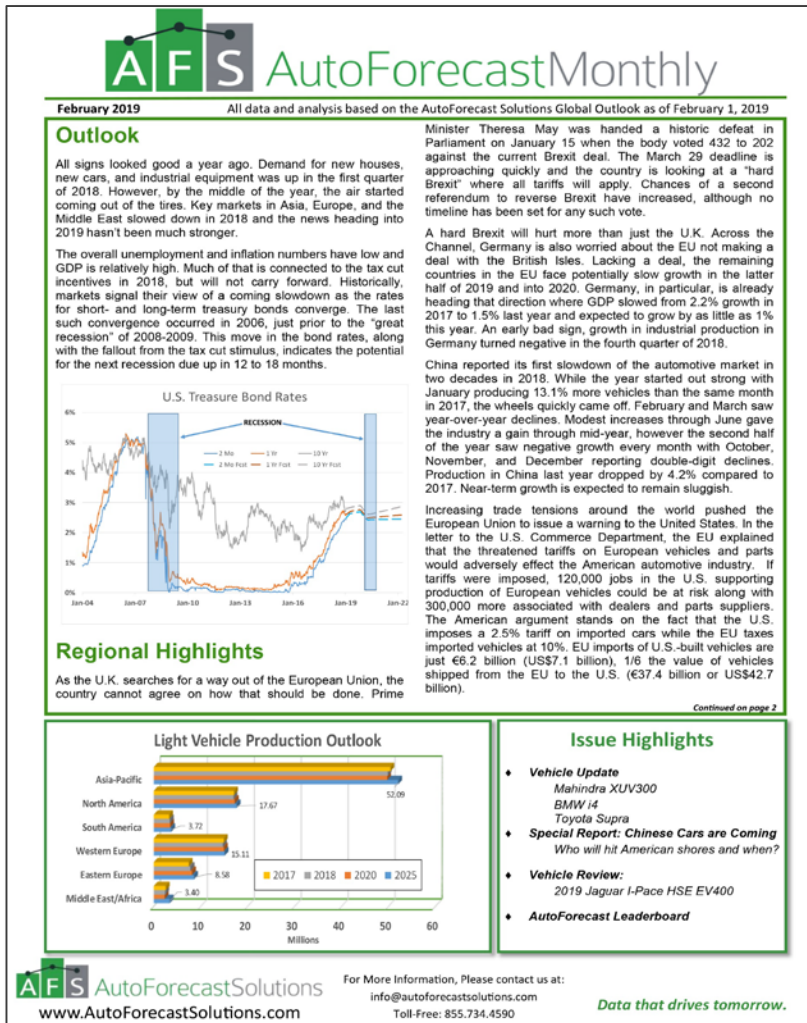


Brian Maxim

- VP, Global Powertrain Forecasting
- bmaxim@autoforecastsolutions.com
- Office: 610.813.6373
- Mobile: 610.823.7232



AFS Market Alerts: AFS Monthly



AFS Monthly Includes:

This monthly distributed document highlights the key issues impacting the AFS global automotive production forecast.

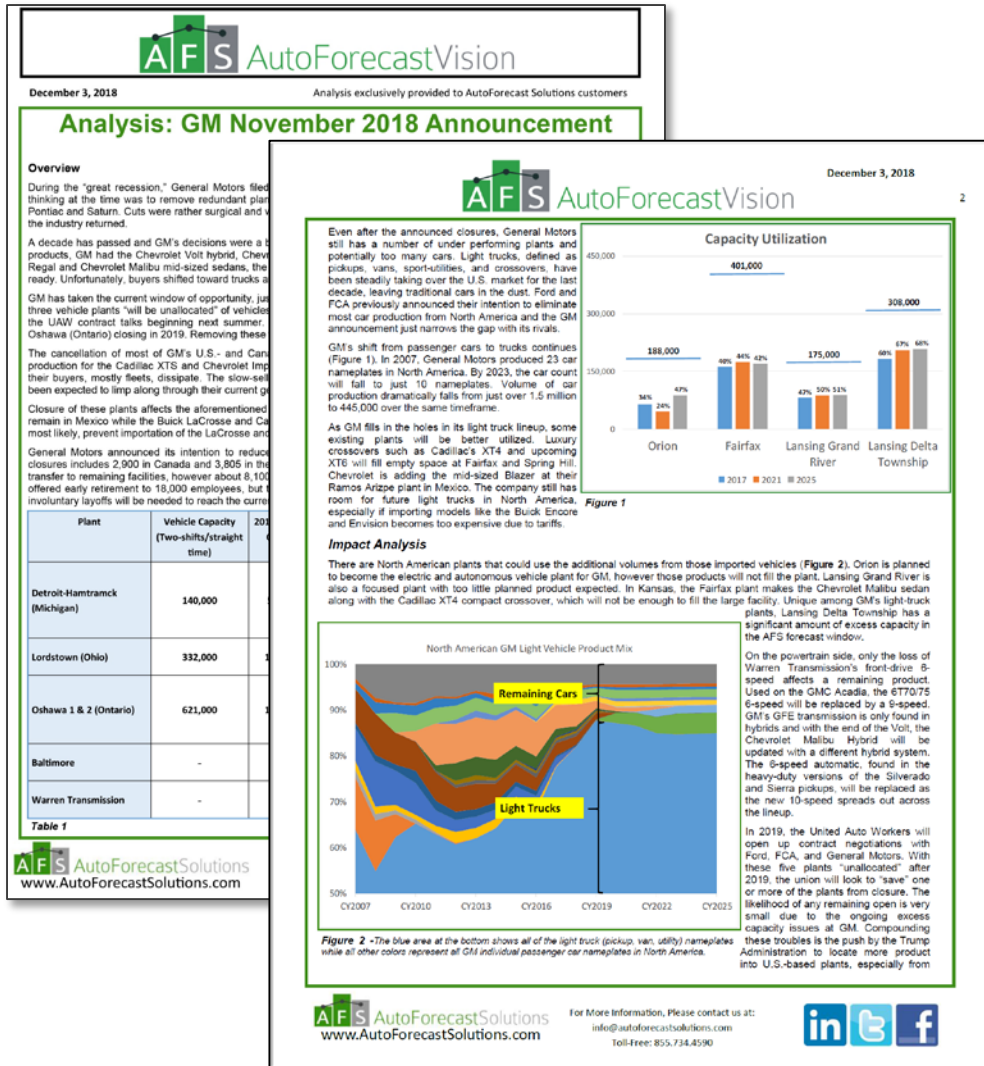
TOPICS INCLUDE:

- Global, regional, and industry issues shaping the outlook
- Detailed analysis by country, vehicle, powertrain, and timely topics that support opportunity identification and revenue growth
- Short-, mid-, and long-term global production outlooks
- Key performance indicators
- Global vehicle production ranking reports
- U.S. light vehicle sales analysis

The volatility of today's global automotive industry requires timely insight for better decision making. AFS Services are designed to improve the competitiveness of our clients. Creating a proactive environment to strengthen core operations while identifying opportunities for revenue growth.

Delivered Monthly as part of your AFS Forecast Subscription

AFS Market Alerts: AFS Vision



AFS Vision Includes:

An analysis of major automotive events impacting the manufacturing footprint and business plans for industry stakeholders.

THE ISSUE: First step is to summarize the issue in a concise way in order to frame the impact on the industry.

THE IMPACT: Second is to analyze the information and provide insight into the impact on the industry, the supply base, the consumer, and the economy.

FUTURE IMPLICATIONS: AFS always looks at the data in terms of how it will affect our customers in short- and long-term. For example:

- An AFS Vision report focused on GM's announcement of plant closures provided an overview of the topic, but went further to analyze the ramifications of the decision.
- By diving deeper into the analysis, It was determined that four additional GM plants are also underutilized. This could have a future impact on production capacity and create a ripple effect for the supply base.
- AFS highlighted the production capacity of these plants in an effort to provide visibility into the additional concerns.

VALUE-ADD: The concept is simple, AFS helps transform your operations from a traditionally reactive business model, to a proactive one. Targeted analysis supports this critical initiative for improved opportunity identification and revenue growth.

Delivered Periodically as part of your AFS Forecast Subscription

AFS Market Alerts: AFS AutoShow Review (ASR)

AFS AutoForecast Solutions ASR
March 2019 Supplement to the AutoForecast Solutions Global Outlook

European Motor Show, Brussels
January 19-January 27, 2019

Ford Mondeo Clipper Hybrid



Ford's mid-sized Mondeo, known as the Fusion in North America, gets its first facelift since entering production in 2014. Updated front and rear, the new Mondeo receives new bumpers, headlights, taillights, and a bit more chrome. In addition to the sedan, the hybrid power is finally offered on the station wagon. Under the hood is Ford's 2.0L four-cylinder joined with an electric motor and a 1.4kWh battery pack.

Hyundai i40



Updates to the large Hyundai sedan and wagon include new front end styling and a new diesel engine. Hyundai's SmartSense includes Forward Collision Avoidance Assist, which alerts the driver of an emergency and can apply the brakes if needed. A new Smartstream 1.6L turbodiesel produces 113hp or 134hp and offered with a manual or dual-clutch transmission.

Land Rover Range Rover Evoque



An evolutionary design updates the oldest model in the Range Rover line, available in standard and sportier R-Dynamic trim. Gone are the two-door and convertible models leaving just the four-door. Inside, the infotainment system gets a 12.3-inch touchscreen along with a heads-up display and audio supplied by Meridian. Under the hood is the JLR Ingenium 2.0L turbocharged four-cylinder engine in either 246hp or 296hp forms. A new Hybrid model adds in a 48-volt belt-alternator system. All-wheel drive is standard on all versions. Sales begin in the spring.

Nissan NV300 Concept



The commercial side of Nissan has been growing over the last few years and this year the attention is on the big NV300. In this concept, Nissan has stocked up the cargo van with all of the things a woodworker might need. Since woodworking goes better with electricity, a recycled Nissan Leaf battery pack has been stashed inside and powered by solar panels. This Energy Pack holds 700Wh and can produce up to 1kW of power.

Continued on page 2

AFS AutoForecast Solutions
www.AutoForecastSolutions.com

For More Information, Please contact us at:
info@autoforecastsolutions.com
Toll-Free: 855.734.4590

Data that drives tomorrow.

AFS ASR Includes:

A summary of vehicle introductions/updates at major global auto shows:

- Images
- Specs
- Vehicle reviews

Recent shows covered include:

- Geneva
- North America International Auto Show
- Los Angeles
- New York
- Shanghai

Delivered Periodically as part of your AFS Forecast Subscription

GLOBAL AUTOMOTIVE PRODUCTION FORECASTING

- Vehicle
- Engine
- Transmission
- Alternative Propulsion
- Drivetrain
- Advisory Services



 8 Year Outlook
Updated Monthly

 Detailed with Attributes

 Over 25 Years of Experience

 Concierge-level Support

Improve Your Competitiveness

- Opportunity Identification
- Better Decision Support
- Revenue Growth

AutoForecastSolutions.com

Data That Drives Tomorrow

AutoForecast Solutions (AFS) is the only fully integrated solutions provider of **vehicle, powertrain, and drivetrain production forecasting, business planning software, and advisory services** to the global automotive industry.



AFS helps our customer...

Understand the opportunities

Develop a value proposition to defend core operations

Identify areas for growth.

Thank You from the AFS Leadership Team



Contact the AFS team for more information and a free demonstration:

ePowerPack@AutoforecastSolutions.com

855.734.4590 ext. 1001